

# SHOWROOM DESIGN IS Simplicity, CARRIED WITH Elegance



## A SHOWROOM'S DESIGN IS ALWAYS TELLING A STORY. HAVE YOU NOTICED?

Showroom Design is thinking made visual, the best way to predict create a future visualization.

A showroom design & art are independent coordinates that provide the greatest satisfaction when experienced simultaneously. It creates cultures, culture shapes values, value determines future. Every Optical Showroom Design has its own flow of communication.

The design and furnishing of your optical store or optometry can create a positive workspace, it can enhance customer experience and also increases sales conversion ratio. Picking the right space for your business is a key component, wherein you can bring new customers and grow your business. Choosing the right team will help you to design and layout of a showroom. Budgets may be varied according to requirements. Light plays a very important role in the designing of the showroom. Technology is constantly evolving, Nowadays Strip Lights, Panel Lights, LEDs tube lights are majorly used in the market with help of

Lights, the showroom looks brighter, cleaner & organized!

## WHO ARE WE?

The Monarch Enterprises was founded in 1998, is one of the leading Manufacturers of Optical Display Solutions in India. Our designs are functional & personalized. We have the largest collection of Optical Display products.

Our core purpose is to provide unique solutions to people and organization through constant innovations.

The Monarch Enterprises deals in Shop In Shops, Kiosks, Mall Spaces, Chain Stores. Lockable Rods, Non Lockable Rods, Display Trays, Counter Trays, Lens Trays, Mirror, Eyewear Display Floor Units (Revolving & Non Revolving Stands), Counter Top Stands, Table Top Displays Stands, Acrylic Stands, Led Chasma, Bag Sets, Trolleys, Eyewear cases, Modular Furniture and Showroom Planning Design and Production.

We have an in-house team of designers, they create 3d designs for showrooms according to client requirements size, location, budget and time frame.

## WHAT DO WE OFFER?

- a) Showroom Design: Design in 3D and logistics.
- b) Production & Execution of design.

Advantages of 3d Design and Modular Furniture.

## 3D DESIGN

3D Design helps end users to get realistic, easy and quick view of the optical shop. Can make changes at the early stage in colour, size, shape and less rework, Increase in Productivity. The client can easily showcase the flow of showroom.

## MODULAR FURNITURE

Installation of modular furniture in showroom becomes quicker. It saves cost & time, the Client can choose materials, finishes, colours, and combinations as per budget. Every part of modular furniture can be customized, Matching components can be added and existing components can be reconfigured. Modular furniture can be moved and replaced easily We are currently focusing on Complete Retail Optical Showroom Design, Watches, Cosmetics, Perfumes, Shop in Shop, Kiosks, Promotion counter, Mobile Outlets.

## WE FOLLOW IN JUST 5 EASY STEPS FOR SHOWROOM DESIGNING.

### Mining

We meet the clients to understand their requirements and take measurements of the store, do a site survey and business model.

### Scaling

We design a detailed plan as per the site survey, client requirements and formulate a final layout a final layout and plan.

### Visualization

Under Visualization the detailed design layout, selections, and imaging are all finalized in a 3d rendering, providing a realistic view of where you will come to know your showroom look after it is made.

### Valuation

Finally fixed & exact detailed cost will all the benefits are provided to the client.

### Reel to Real

Production starts, quality checks are completed and installation is done on site. The realistic view is finalized and will be real showroom design will be finally completed.

THE REALISTIC VIEW FINALIZED WILL BE IN REAL FINALLY.





## LATEST SHOWROOM DESIGNING BASED ON BUDGET SPENDING:



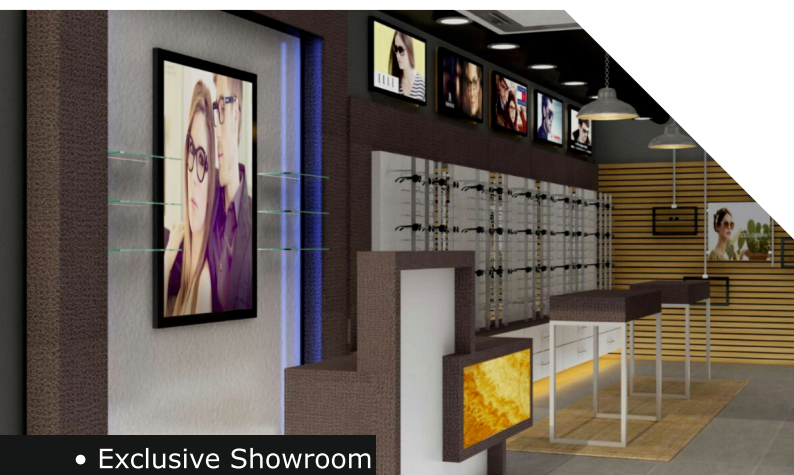
• Economy Showroom



• Classic Showroom



• Premium Showroom



• Exclusive Showroom

Now is the time to take the step!  
don't let your dreams fade away. Let  
us convert your dreams into a  
beautiful reality!

### Tips from Expert

#### New Signage:

Adding signage can point your customer in the right direction, making it easier and more convenient to shop and find exactly what they are looking for.

#### Mirrors:

Mirrors are the perfect addition to any space. They help to open up space, but also provide the perfect canvas for your customers to view your merchandise.

#### New Accessories:

Surprisingly, new space accessories (i.e. paint, flooring, seating, lighting, etc...) can make all the difference in the overall appearance of your space. Perhaps changing the colour of your walls can create a new look for your showroom.

#### New Displays:

Even just updating your frame boards can create the look of a new dispensary without having to redo everything and start from scratch! With the help of our new "Complete Systems," it is even easier to pick out a new look.



**THE MONARCH<sup>®</sup>  
ENTERPRISES**

[www.opticaldisplay.net](http://www.opticaldisplay.net)

Tel: +91-22-2309 5378 / 81

Mobile: +91-8452002493 / 94

E-mail: [info@themonarch.in](mailto:info@themonarch.in)